

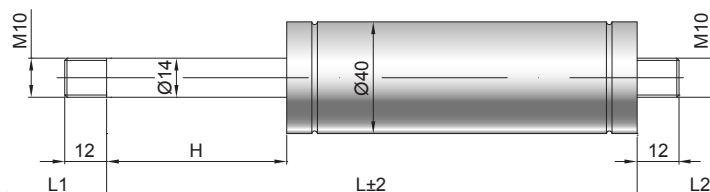


## Ölbremse D 14-40

Dämpfungskraft	400 - 2500 Newton
Kolbenstange	Ø 14 mm, Stahl hartverchromt
Druckrohr	Ø 40 mm, Stahl schwarz lackiert
Anschlüsse	Stahl blau verzinkt

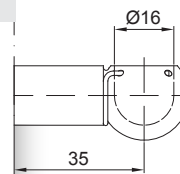
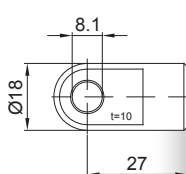
GZ 12

GZ 12



AU 27

PF 35



### Details

Standardhübe H (mm)  
 50, 60, 80, 100, 120, 150, 160, 200,  
 210, 220, 250, 270, 300, 350, 400, 450,  
 500, 550, 600, 650, 700

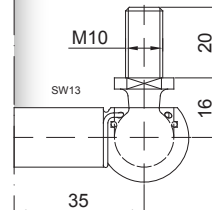
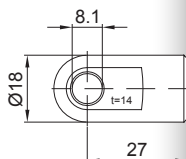
Standardlänge GL  
 $L = 2 \times H + 60$   
 $GL = L + L1 + L2$

Extras  
 6 - Schutzrohr

Dämpfung  
 1 = Zugdämpfer  
 2 = Druckdämpfer  
 3 = beidseitig wirkender Dämpfer

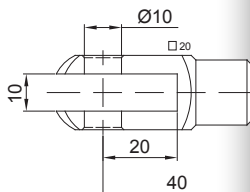
Weitere Anschlüsse finden Sie hier [▶](#)

AS 27

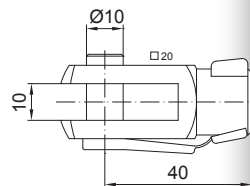


WG 35

GA 40



GG 40



AG 43

