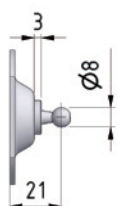
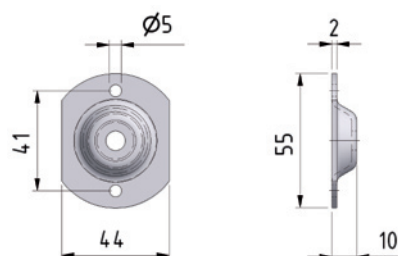
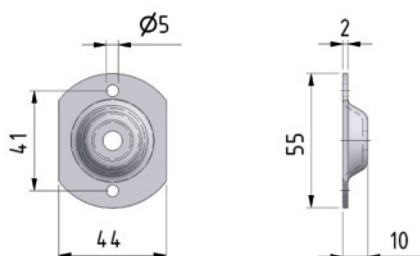




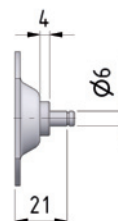
Rundbeschlag

Material Stahl blau verzinkt
Optional Edelstahl W.1.4404 / AISI 316 (V4)

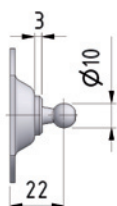
BA 20 / BA 20 V4



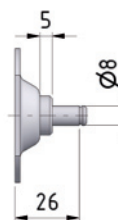
BA 20 K08
BA 20 K08 V4
Festigkeit max. 500 N



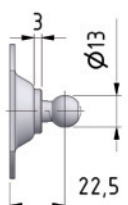
BA 20 Z06
BA 20 Z06 V4
Festigkeit max. 500 N



BA 20 K10
BA 20 K10 V4
Festigkeit max. 800 N



BA 20 Z08
BA 20 Z08 V4
Festigkeit max. 1200 N



BA 20 K13
BA 20 K13 V4
Festigkeit max. 1200 N