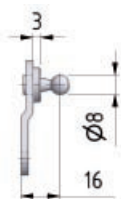
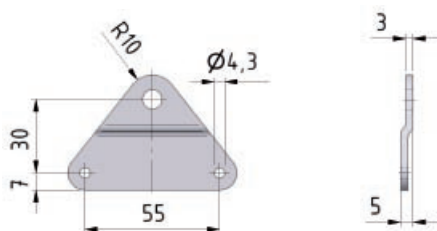
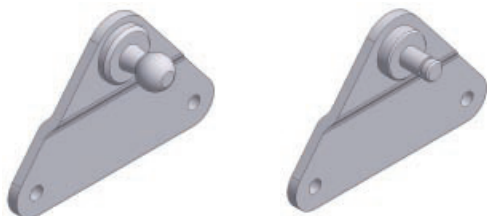




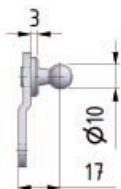
# Seitenbeschlag

Material    Stahl blau verzinkt  
Optional    Edelstahl W.1.4404 / AISI 316 (V4)

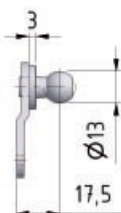
## BA 01 / BA 01 V4



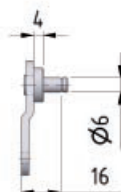
BA 01 K08  
BA 01 K08 4A  
Festigkeit max. 500 N



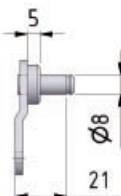
BA 01 K10  
BA 01 K10 4A  
Festigkeit max. 800 N



BA 01 K13  
BA 01 K13 4A  
Festigkeit max. 1200 N

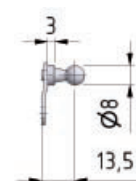
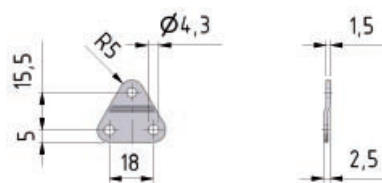


BA 01 Z06  
BA 01 Z06 4A  
Festigkeit max. 500 N

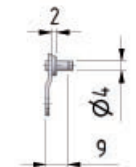


BA 01 Z08  
BA 01 Z08 4A  
Festigkeit max. 1200 N

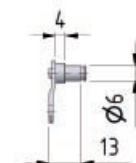
## BB 01 / BB 01 V4



BB 01 K08  
BB 01 K08 V4  
Festigkeit max. 180 N



BB 01 Z04  
BB 01 Z04 V4  
Festigkeit max. 180 N



BB 01 Z06  
BB 01 Z06 V4  
Festigkeit max. 180 N